

Garden Highlights, February 2016



1. This month we highlight the diversity of Australian trees.
 1. **Cabbage Fan Palm** *Livistona australis*, is the only palm indigenous (native) to Victoria. The photo shows **Bangalow Palm** *Archontophoenix cunninghamiana*, that grows along Australia's east coast in NSW and Queensland. **Kentia Palm** *Howea forsteriana* has been cultivated around the world as an indoor plant, being very popular in hotel lobbies in the late 19th and early 20th centuries. It is endemic (unique) to palm forests of World Heritage, Lord Howe Island.
 2. **Myrtle Beech** *Nothofagus cunninghamii* growing in temperate rainforest such as the Otways can reach a height of 50 m, supported by a large trunk. In alpine areas they reach 1 m high. Its 'Tasmanian Myrtle' timber is used for fine furniture. Like most rainforest trees, they cannot withstand intense fire and can be replaced by Moist Eucalypt forest. This plant may be available in the Friends Nursery.
 3. The **Wollemi Pine** *Wollemia nobilis* (photo) is one of two great botanical discoveries of the 20th century (the other being the **Dawn Redwood** *Metasequoia glyptostoboides*). It was known from fossils throughout the last 100 Million years, but thought extinct until it was found in 1994 in NSW. It is related to the Australian **Bunya Bunya** *Araucaria bidwillii* and **Queensland Kauri** *Agathis robusta* growing nearby in these gardens.
 4. **Black Bean** *Castanospermum australe* grows in rainforest along Australia's east coast north from Lismore, NSW. After flowering it produces large pods containing big seeds. Young plants are sometimes sold in nurseries as indoor plants, growing in a pots.



Photo 2: Arthur Chapman, Flickr.com CC BY-NC-SA 2.0

What's on in February 2016

Discovery Walk: 'Special Collections: Pelargoniums and Salvias', Sunday 14 February 2:00 pm.

Bus Trip to Heide Museum of Modern Art and Gardens, Thursday 18 February, 8:30 am - 5:00 pm,
\$45 Friends members, \$55 non-members. Book before Friday 12 February.

Botanical Art Workshop for Beginners, Weekend 20 - 21 February, 9:30 am - 4:30 pm,
\$120 Friends members, \$150 non-members.

Discovery Table, Sunday 21 February 1:00 - 3:00 pm.

Free Guided Walks, Each Sunday 2:00 pm, Wednesday 11:00 am.

Open Gardens Victoria, Arundel, Weekend 5 - 6 March

The Friends' Nursery is open on Wednesdays 9:30 am - 12:30 pm, and 19 - 20 March weekend.

The Tea House is open every day.

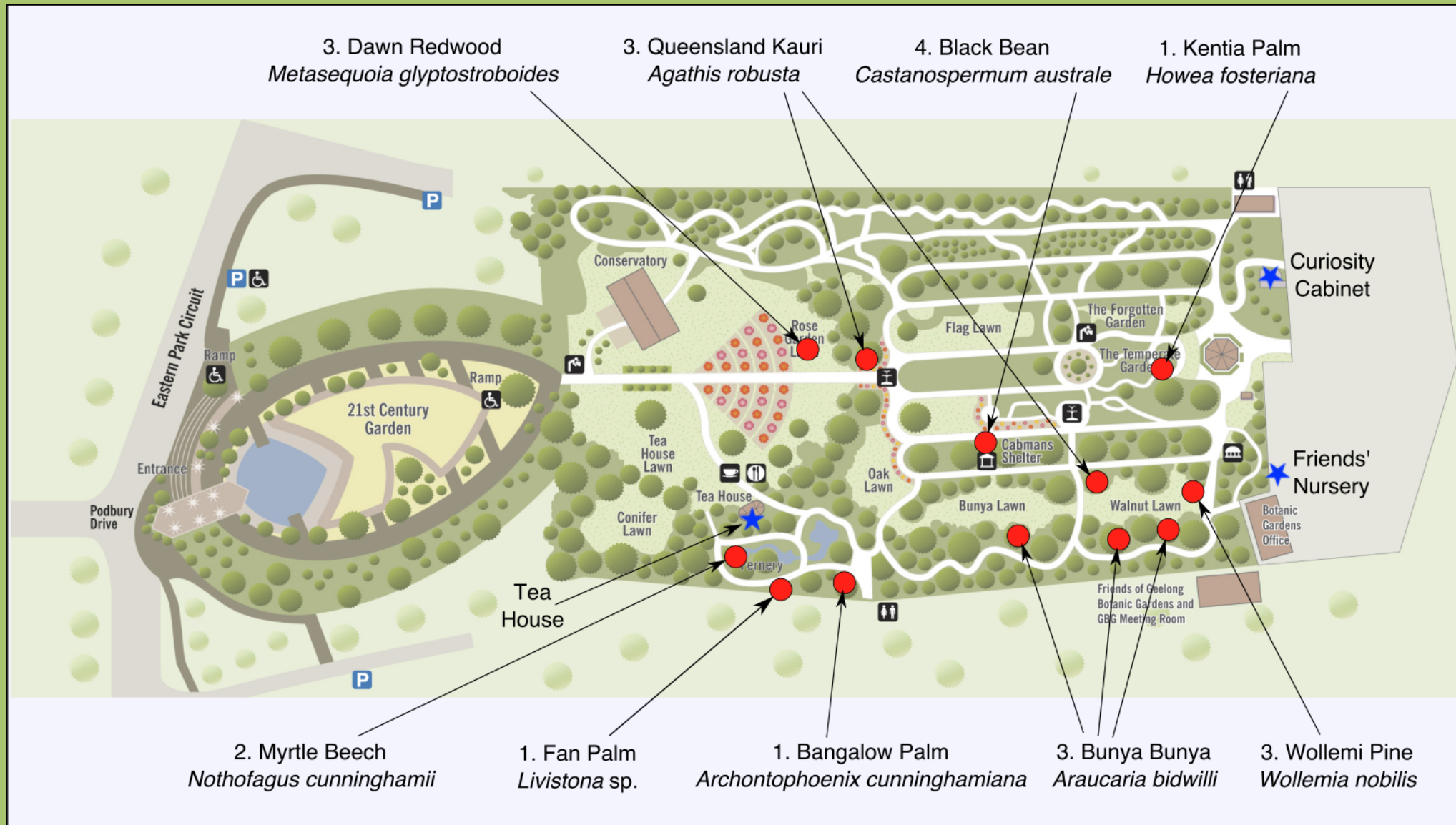


Over page: Map showing these plants

www.friendsgbg.org.au

Phone: 5222 6053

Geelong Botanic Gardens Map



This information was developed by the Volunteer Guides
Friends of Geelong Botanic Gardens

www.friendsgbg.org.au
www.geelongaustralia.com.au/gbg/