

Jubaea



FRIENDS OF
GEELONG
BOTANIC
GARDENS

Friends of Geelong Botanic Gardens Inc. Newsletter

Volume 19 Issue 2

June 2019



Volunteers, Jo, Geoff, Norma, Judy, Jenny, Mei, Barrie and Sarah

VOLUNTEERS CELEBRATED

Ways of attracting wildlife into our gardens dominated the guest speaker's presentation at the Volunteers Lunch, held to celebrate National Volunteer Week on May 22.

Lachlan Forbes, Biodiversity, Field and Education Officer from the Bellarine Catchment Network, gave an informative talk about the "Gardens for Wildlife Victoria" project, operating in the Bellarine area since 2016.

The program, which was established by Knox City Council and Knox Environment Society in 2006, sets out to improve biodiversity in small spaces to create larger wildlife corridors.

During his talk Lachlan described the use of plants, birdhouses and natural habitat, such as logs and mulch, to encourage timid creatures to move into our backyards.

Lachlan showed slides and suitable flora that would attract wildlife and acknowledged that, as gardeners, we were already doing many of the right things to attract native fauna.

Four delicious soups and an assortment of bread were shared by almost forty volunteers and all volunteer groups were well represented.

Friends' President, Allison Martland, thanked ALL volunteers and especially praised the Heritage Rose Group, some of whose members have been volunteering for more than twenty years.

The Friends have about eighty volunteers who enthusiastically contribute their time and energy to support Geelong Botanic Gardens. Friendship, fun and a sense of purpose are the rewards for their valued service.

Lucy Pope

HANDS ON VOLUNTEERS

HERITAGE ROSE GROWERS

Flowering has slowed in the rose beds, so we had no working days during April. The bushes look healthy though, thanks to the in-ground watering system. Despite Maree's efforts, the weeds also look healthy!

Otherwise we inspected the roses for dead, damaged or unproductive shoots, and removed these. We've been generally tidying up and dead-heading blooms. We've also compared the growth on bushes we pruned lightly last winter with others more severely pruned. Further to this, Marg is currently compiling a table of comparative theories on Heritage rose pruning from Dennis Dempsey (HRA 2018 conference speaker), Wal Johnson (Werribee Rose Gardens) and members of our group. This, we hope, will inform our serious pruning this winter.



The several clematis on towers are looking fabulous, no little thanks to Zoe's meticulous, continual, tying-in of their vines!

We've ordered more roses to replace two that were removed by Gardens' staff at our request. "Old" roses are hard to source. Still waiting, and we don't always get what we ordered!

The watering system has bypassed a box ball on the western side; it is close to dying. This has been reported to Gardens staff. Generally speaking, the box balls are looking ragged and needs shearing.

Lyn Lang

GUIDES

This year has seen a few changes amongst our group. Cherry Collins retired from her position as the coordinator, and Gwen Anderson was duly appointed. Tilly Brunton is the new recorder of the rosters and statistics for the group.

Once again, we commenced the year with our U3A course but due to the overwhelming response, we trialed two sessions, one morning and one afternoon. Despite the success of the course we have decided that one session per week is enough for the instructors as well as the morning and afternoon tea providers.

As part of our 2019 Professional Development, we had a recent visit to the Royal Botanic Gardens Melbourne to take a Climate Change Walk, and in June we are planning to view the film *Kingdom: How Fungi Made Our World*.

Botanic Gardens Day was held on Sunday May 26 and we were very involved offering a Discovery Table as well as welcoming and directing visitors to activities throughout the gardens.

In June we will be commencing our guides training course, which currently has six enrolments, some whom also completed the U3A course. This involves four structured classes with a mentor helping the guide to achieve several tasks which will lead them towards being involved as a volunteer guide in 2020.

During September several guides will be attending the annual Australasian Guides Conference to be held in Perth.

Gwen Anderson



PERENNIAL BORDER



2019 has been another great year for the Friends Perennial Border group. With some new hands joining us this year in the border, we feel very lucky to have such a dedicated and competent workforce. Our keen and passionate volunteers bring a wealth of knowledge to draw upon, while long term Friends member Jimmie Morrison continues to provide the overall coordination required to keep everyone on track.

As usual the Perennial Border is an ongoing experiment, as we continue to discover which plants thrive and deliver in our climate and soil (and we are lucky to have copious amounts of recycled water

available here at the gardens!), or sadly die for one reason or another. They will also be removed if considered unsatisfactory for their contribution to the border.

This year there has also been a bit of a reshuffle in the border. We have re-arranged some plants that we thought worked well together, and we have also included many new and exciting plants. In these new additions, we've even included some slightly shrubbier plants to provide a longer season and some ongoing interest, and some structure during the border's down time. We look forward to seeing how the border emerges in the coming spring and performs over summer and autumn (and even winter) from these changes.

Jane Edmanson included the Geelong Friends Border in a Gardening Australia segment on May 24 in the lead up to Botanic Gardens Day on Sunday May 26 2019. We feel very proud that our unique and valuable interaction with the Geelong Botanic Gardens was covered in this story, and we look forward to continuing this collaboration in the future.

Ben Nunn

NURSERY GROWERS

Coordinators in the Friends' Nursery have been working to improve procedures and practices to produce healthy plants for sale and an efficient and friendly work environment.

- A revised version of the Growers' Handbook outlines management of the Growers Nursery and the responsibilities of the coordinators and the volunteer Growers.
- Regular training sessions are held on current issues and we are planning for more workshops about propagation methods and other nursery procedures.
- Orientation for new nursery volunteers has begun, and we look forward to welcoming them to our team as positions become available.
- Gardens staff (especially Mark and Phil) are working with us to improve access to plant material for propagation and to provide advice and assistance
- Perennial Border volunteers work with us to share material for division or cuttings

Over the long, dry summer, plants often have to be hand-watered every day. As plant stocks increase, this task can take up to two hours. Thank you to all the Growers and other helpers who have willingly volunteered to give so much time to our nursery.

The heat has also caused adjustments to plant storage: hot-bed, shadehouse, glasshouse, holding tables and watering regimes have been juggled to keep our plants happy. We have had some losses in the extreme conditions, but are working to find solutions.

In spite of the weather, we had another very successful March weekend plant sale, as well as increasing numbers of customers every Wednesday. The Nursery continues to be a major fund raiser for the Friends.

Leanne Barnes



LIBRARY



We have all been kept busy over the past months. Meralyn and Nadia have almost completed work on all of George Jones' papers. The books have been dispersed to various libraries, including our own and the remainder sold for the benefit of the Friends.

Recently we received a call from Alex Jigalion, from Bell Park, as he wished to donate a collection of general gardening books. The collection is quite large and we will have book sales at the Botanic Gardens Open Day on May 26 and the two weekend plant sales in July and October, weather permitting. We thank Alex for his generous donation to the Friends.

The Friends' History Timeline continues to be updated and is now together in one document. Various people are responsible for writing articles about specific areas of Friends' activities and it is planned for these to be compiled together with pictures to tell our story.

The blue bookshelf in the Gardens has a collection of children's picture books to read whilst they are enjoying the outdoors. It has proved popular with families. If you are able to donate any children's books that would be suitable for this purpose, please contact the Friends' Office.

Luanne Thornton

NEW VISITOR FACILITIES @ GBG

Geelong Botanic Gardens' new Visitor Facilities will enhance our amazing garden.

We are very excited about this project to enhance the visitor experience with a facility of a quality matching our beautiful garden. The facility opens up opportunities to develop our public programs aimed at engaging people in the fascinating world of plants. An outdoor classroom for the many students and families who participate in our growing education and public programs benefits our community.

The architecturally designed building will be located in the southern section of the garden. The facilities will provide unisex toilet facilities and shelter. Importantly the sheltered area becomes our 'Outdoor Classroom' for our education program.

The Geelong Botanic Gardens & Eastern Park Strategic Plan identified the need for a second toilet block within the gardens. The plan also includes an action to enhance the visitor experience through public programs and improved facilities. This intent to improve the gardens facilities has had long term support from the Friends Group and received a \$10,000 contribution to the first planning stage.

This is the third stage of the total project. We first needed to install a sewer line to remove sewage from site. We then updated the toilets near the meeting room to flushing toilets. Council has committed capital funding to deliver the building during the 2019 -20 financial year.

Gardens evolve over time and we wanted a building that respected the gardens history and enabled us to support contemporary visitor needs. The building has been positioned in an area south of the garden which is currently undeveloped. It also means that our existing important plant collection won't be affected.

Our selected architect was given a brief to design a building in harmony with our amazing garden and surrounding Eastern Park. We want people using the building to feel that they are in an outdoor place where they can fully enjoy the gardens.

So the pavilion has a wall to protect visitors from the wind and afternoon sun. The other side is open to the long view east which includes a different perspective of some of the Gardens' amazing trees.

We are using durable materials appropriate for an indoor – outdoor building. External walls are non-reflective zinc cladding which is a dark blue grey. This colour blends well into the surrounding landscape. Internal walls will have some timber panelling and floors will be concrete. Copies of our plans remain on display in the gardens meeting room.

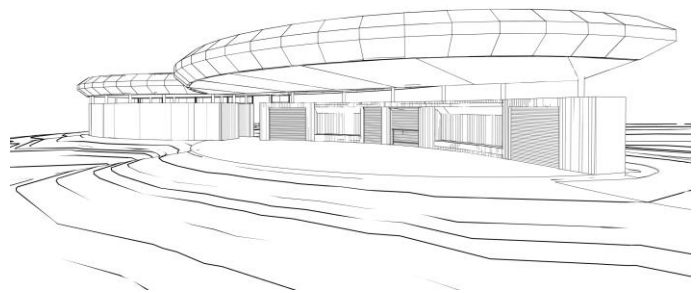


Image supplied by City of Greater Geelong

The carefully chosen location and building materials means that the low profile building will have a low impact on views from the existing garden or surrounding Eastern Park. Planning requirements met for the project includes cultural heritage, Heritage Victoria, Planning and Building permits. Works will require relocation of toilet facilities and closure of the building site for safety.

We're thrilled to be building new visitor facilities this coming financial year which will enhance the experience we offer to our visitors.

Annette Zealley, Coordinator Geelong Botanic Gardens



Image supplied by City of Greater Geelong

PERMACULTURE WORKSHOP WITH BEN SHAW

“Permaculture is a holistic approach to landscape design and human culture. It is an attempt to integrate several disciplines, including biology, ecology, geography, agriculture, architecture, appropriate technology, gardening and community building”

Guy Baldwin

On the day before the workshop we were all expecting flood. During that night Geelong had over 20 mm of rain – the first good rainfall since before Christmas and a most welcome relief for humans and plants alike. But conditions turned out to be fine and two successful workshops were enjoyed, along with delicious morning and afternoon teas.



Healthy tree tomatoes

Ben's home in Manifold Heights is shared with his wife, two small daughters, four chooks and thirty-six fruit trees. On arrival we had time to explore the back yard which has over time been transformed into a veritable food and lifestyle garden for the family and a wonderful play area for the children.

Ben's permaculture background led to designing his house, living spaces and interaction with the outdoors with the emphasis on comfort, low energy use, a lifestyle area for the kids and adults and plenty of room for the hens, fruit trees and vegies. This was accomplished with the clever and sensitive use of light and shade, raised areas, winding paths and nooks for fairy gardens and an insect hotel, as well as espaliering of fruit, trellising, layering and placement of plants according to aspect

and other plantings. The garden was extremely productive and provided for the family with some spare produce, which could be shared with friends and neighbours as well as used for barter when required.



Jenny discussing the salvias with John

The chooks are part of the cycle as compost processors, fertilizers and egg providers.

The workshop was fascinating and gave even the most experienced gardeners in the group food for thought and ideas to take home.

Ben runs regular workshops on various topics. For more details www.benshawpermaculture.com

Luanne Thornton



Roz and Luanne admiring the vegetables and espaliered fruit

SUMMARY OF RECENT EVENTS

LARA/WERRIBEE BUS TRIP

Monday 25 March saw around thirty people board the bus for a great day out. We travelled to Yarrabee Native Gardens at a property just outside Lara and met Judy and Steve - two of the most enthusiastic gardeners ever.

Their garden (Yarrabee is aboriginal for 'place of many gums') is a mixture of Australian natives and exotics, with dry sunny spots on 5 acres (2.5 hectares). Fully landscaped with many garden beds, a dam, waterfall and three ponds, Yarrabee encompasses a wide range of habitats and plants.



Kevin Hoffman's Walk

Walking paths and bridges have been designed so that the garden beds are connected. There is a covered orchard with 38 fruit trees, strawberry beds, loganberries, blackberries, raspberries and inca berries. Water is supplied from their own bore. Drinks, frozen berries, jams and plants were available. We had a delicious morning tea with homemade treats served under the rotunda and we bought some of their plants and homemade preserves.



Friends enjoying the garden at Yarrabee

We then went to Lara to meet Beverley Hoffman and gardener Matt, at the Kevin Hoffman Walk. We were very impressed with the improvements to the site and new plantings since our last visit three years ago. A passive, scenic, linear 800 metre trail, the Kevin Hoffman walk is Lara's Native Botanical Garden that stretches along the east side of the tranquil Hovell's Creek. The Walk is a gentle walking track that showcases a unique collection of native plants, sculptures, birds and wildlife. There is regular seating along the trail to allow you to enjoy the colours and beauty and to listen to the marvellous birdsong.

On the bus once more, we travelled to Werribee for the highlights of Werribee Park. Our tour started at the Rose Garden where the blooms were wafting their amazing scents. Lunch was catered by the Karen Community using some interesting vegetables grown by volunteers in their Community Garden on site at the Old Homestead. With Colleen Miller, a volunteer worker and Adam, a Parks Victoria Ranger, we toured the headquarters of NatureWest which also has its office in the Old Homestead. One young man from the Karen Community has become a Ranger alongside Adam and he showed us the Karen "Men's Shed" with many fascinating bamboo creations on display. He also spoke passionately about the task of conserving the local environment.



Pammi and Allison at the Kevin Hoffman walk

Our final stop on the way home was at Roraima Nursery and Display Gardens where we all had great coffee and were inspired by Lyle Fillippe's amazing collections of Natives, Cacti, exotic architectural plants and succulents along with his very quirky garden ornaments and heavy metal decorator items.

Anthea Williams

FUNDRAISER FILM NIGHT - *THIS BEAUTIFUL FANTASTIC*

Tuesday 12 February at the Shirley Mills 'Plaza Theatre' at St.Mary's. The rider for this movie says "life blooms in enchanting ways". It certainly was an enchanting film, leaving those who attended feeling uplifted again by the power of gardening. Bella Brown (Jessica Brown Findlay) is a quirky girl with a unique past who works in a library while trying to write a children's book. She also hates plants, but as a condition of the lease on her house, she must maintain the garden. Her landlord becomes aware of her neglect of the garden and gives her one month to fix the landscaping or face eviction. Along the way, she develops relationships with her curmudgeonly neighbour (Tom Wilkinson), his cook /housekeeper (Andrew Scott), and an inventor (Jeremy Irvine) who frequents the library.

The DVD is now available in the Friends Library for those who would like to borrow it.

Anthea Williams

PLANT IN FOCUS: *MICROSERIS WALTERI*

Murnong *Microseris walteri* was an important plant in the life of Aboriginal people in Western Victoria and other parts of south eastern Australia. Its tubers provided a consistent supply of energy-rich food for more than half the year. It was widespread, prolific and easy to harvest because the tubers grow close to the soil surface. The Murnong is a yellow-flowered daisy in the milky sap tribe of the daisy family *Asteraceae*. Like many daisies, its small seed sit below a parachute of bristles. This ensures the wind catches the seed, separating it from the plant and carrying it some distance. The rich volcanic soil of Western Victoria provided an ideal growing medium for these plants.

The Murnong tubers allow the plant to survive the hot dry summer conditions in the relative cool below the surface. New shoots appear with the rain in late autumn or early winter.



Murnong *Microseris lanceolata* flower head, NSW

Aboriginal food use

As the tubers have a sweet, pleasant taste, raw or cooked, they became a staple food for aborigines in the areas where they were abundant. In such areas it only took an hour's work to dig 8 kg of tubers. Women collected the tubers using a pointed digging stick. This was relatively easy because the tubers are close to the surface. Children were taught to dig for tubers as soon as they could walk. To prepare the tubers, women first made a rush basket. They put washed tubers in the basket and the basket put into an earth or mound oven in the evening for next morning's breakfast. Often several families cooked together. Their combined harvest could be a pile of baskets one metre high. In some areas this resulted in a sweet dark-coloured juice, called 'minni'. The sugar in this juice allowed more of the nutrients in the tubers to be digested.

Murnong areas were burned during the dry season. This cleared away dead leaves, leaving an open area, fertilised by ash suitable for growth when the rain came. The tubers

underground were not affected by the fire, allowing the plants to regenerate during the late autumn, early winter growing season.



A tuber is developing among the roots of Murnong *Microseris scapigera*,

Decline

European settlement began around Port Philip Bay in 1835, attracted by land suitable for grazing sheep. Sheep numbers grew very quickly. In their first year in Murnong areas, the sheep fed almost exclusively on the leaves and tubers. Within five years the Murnong were gone. The loss of Murnong tubers and other plants left aborigines with no vegetable food. They were also denied access to their hunting grounds and sea food collecting areas.

Geelong Botanic Gardens (GBG) role in restoring the lost grassland flora

Grasslands are among the most endangered natural areas worldwide. In Victoria, the last remaining grasslands are on country roadsides, railway reservations and a few farm areas considered of low productivity. Greening Australia is an organisation restoring native environments across Australia. (www.greeningaustralia.org.au). GBG is working with Greening Australia through the establishment of seed beds to produce seeds of endangered grassland plants for sowing in restoration areas.

Extract from a paper prepared by David Johnson, volunteer guide GBG.

For the complete article, see:

www.friendsgbg.org.au/recent-archives/plant-focus

Note:

Recent plantings of *Microseris* have been in the central bed, with other root vegetables, as well as in the long seed beds near the southern fence of Geelong Botanic Gardens.

BOTANIC GARDENS DAY

Theme: Botanic Gardens Conserving Plants - Our Lives Depend On It

Sunday 26 May did not deliver the rain that was forecast for Geelong earlier in the week and we were lucky to actually see the sun shining through the clouds most of the day. Even though the wind was gusting the Gardens provided its usual sheltered spots and our visitors kept coming and going all day. Our Volunteer Guides were out in force providing a welcome at the main entrance, two guided walks to show visitors our amazing garden as well as roving Guides throughout the day. The Discovery Table was set up with examples of The Underground - root vegetables harvested from those growing in the Central Bed. Volunteer Guides showed our visitors the edible plant parts from under the soil and provided visitors with the opportunity to taste many freshly dug (and washed) specimens. Tastings from Sweet Potato, Peruvian Ground Apple, Sugar Beet, Sugar Cane, Parsnips, Carrots and Horseradish were enjoyed.



Members from the FGBG Committee of Management assisted with the Discovery Table, Nursery Sales and setting up the Meeting Room and Merchandise Stall. They were also available to meet visitors and answered questions about our organisation.

The Growing Friends ran a Plant Sale in the Nursery and sold many plants - all propagated from established plants in the main garden collection. Succulents were popular choices along with Australian groundcovers and salvias.

The Geelong Field Naturalists Club set up an information booth in a great marquee and challenged visitors to Find Our Insects and Birds.

The GBG Education Officer led groups of visiting children on a bug hunt armed with magnifying glasses and bug ID sheets. There were two Story Time sessions at the Conservatory. All these organised activities for children were free as well as those that were self guided - such as the maze in the 21st Century Garden gravel area and giant games on the Conifer Lawn.

The Friends' School of Botanic Art ran a Pop Up Gallery and Art Show in the Meeting Room and many beautiful works of botanic art were on display and for sale. Another highlight was an opportunity to meet Ian Rogers, Ex-Director of the GBG, who recently self-published a wonderful chronological, pictorial history of the Geelong Botanic Gardens, titled *Kangaroo Grass to Geelong Botanic Gardens and Eastern Park*. Ian had copies of his book for sale and was available for signing them. He also led a Guided Walk *Exploring the Hidden History of the 19th Century Garden*. Volunteer Library Staff ran a very successful Second-hand Book Stall selling books that had been donated to the Friends.

Many visitors had seen Geelong Botanic Gardens featured on Gardening Australia on ABC television the night before. Jane Edmanson had interviewed Annette Zealley back in the Summer when the Perennial Border was a blaze of colour. The salvias were the colour feature in the GBG on Sunday, but the Border was still interesting in its great variety of Autumn foliage with bright yellow and blue floral highlights.

Anthea Williams

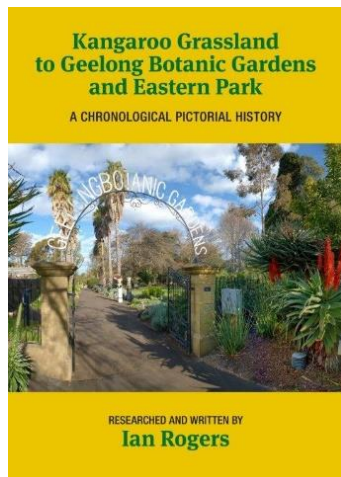
GIFT FUND

The Gift Fund currently has \$435,981 and we look forward to continuing support for projects in the Geelong Botanic Gardens with these funds. Details of our past support are on the Friends' website.

Our continuing thanks for all donations; recent donations have been received from Kate Summers, Estate of Mrs Adine Rawle and four others who wish to remain anonymous.

BOOK REVIEW:

Kangaroo Grassland to Geelong Botanic Gardens and Eastern Park by Ian Rogers



This comprehensive publication, a chronological pictorial history, researched, written and illustrated by Ian Rogers, former Geelong Botanic Gardens Director provides a remarkable insight into the social and horticultural history of our Botanic Gardens, the fourth oldest in Australia.

Ian followed in the footsteps of seven previous curators and for over twenty years, lived with his family on the

site of the original Superintendent's residence in a 'new' cottage built in 1942. Nothing in the Gardens or surrounding Eastern Park escaped his notice. His passion for the Gardens, horticulture and photography gives the reader accurate records of recent times, while his excellent research has chronicled and illustrated the early history of our very significant Botanic Gardens.



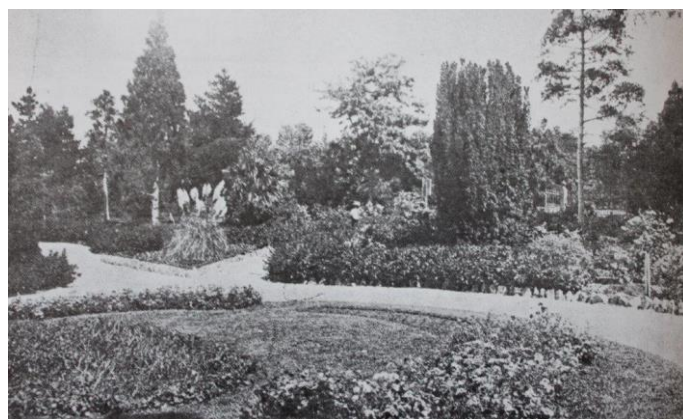
Raddenbury Fernery area circa 1928

The introduction acknowledges the persistent advocacy of our eminent early citizens to secure land for Botanic Gardens by engaging the support of Charles La Trobe, Superintendent of the Port Philip District of the Colony of NSW. On 10 April 1851, the NSW Government legislated that 184 acres be set aside for a town park and public gardens. The Geelong Botanic Gardens encompassing the whole of Eastern Park area was the fourth such gardens to be established in Australia.



Raddenberry Fernery from Gardens Cottage

Geelong Botanic Gardens has a very rich history and much of it aligns with development of the town and then the City. The early curators, Daniel Bunce appointed in 1857, John Raddenberry in 1872 and John Day in 1898, brought expertise to the Gardens and laid strong foundations for their future. Trees listed on the National Trust Heritage Tree Register were planted during this era.



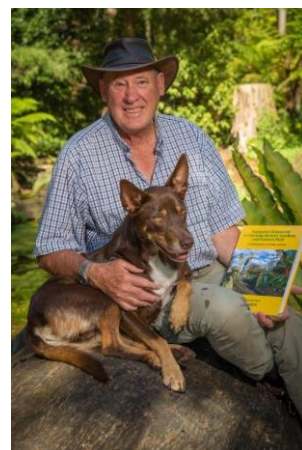
GBG entrance and gates 1911

Development, events and changes that have taken place since 1900 are well documented and illustrated with maps and many photographs. The formation of the Friends in 1985 is noted together with their ongoing contribution to the Gardens. Future plans for the Gardens are discussed with current Director Annette Zealley and an exciting future is promised as it adapts to remain relevant to community needs and expectations.

This large book is very easy to read, it records a journey of 168 years and I would enthusiastically encourage all who are interested in our Botanic Gardens and the history of Geelong to purchase a copy.

Thank you to Ian for this valuable and interesting book.

Jayne Salmon OAM



2019

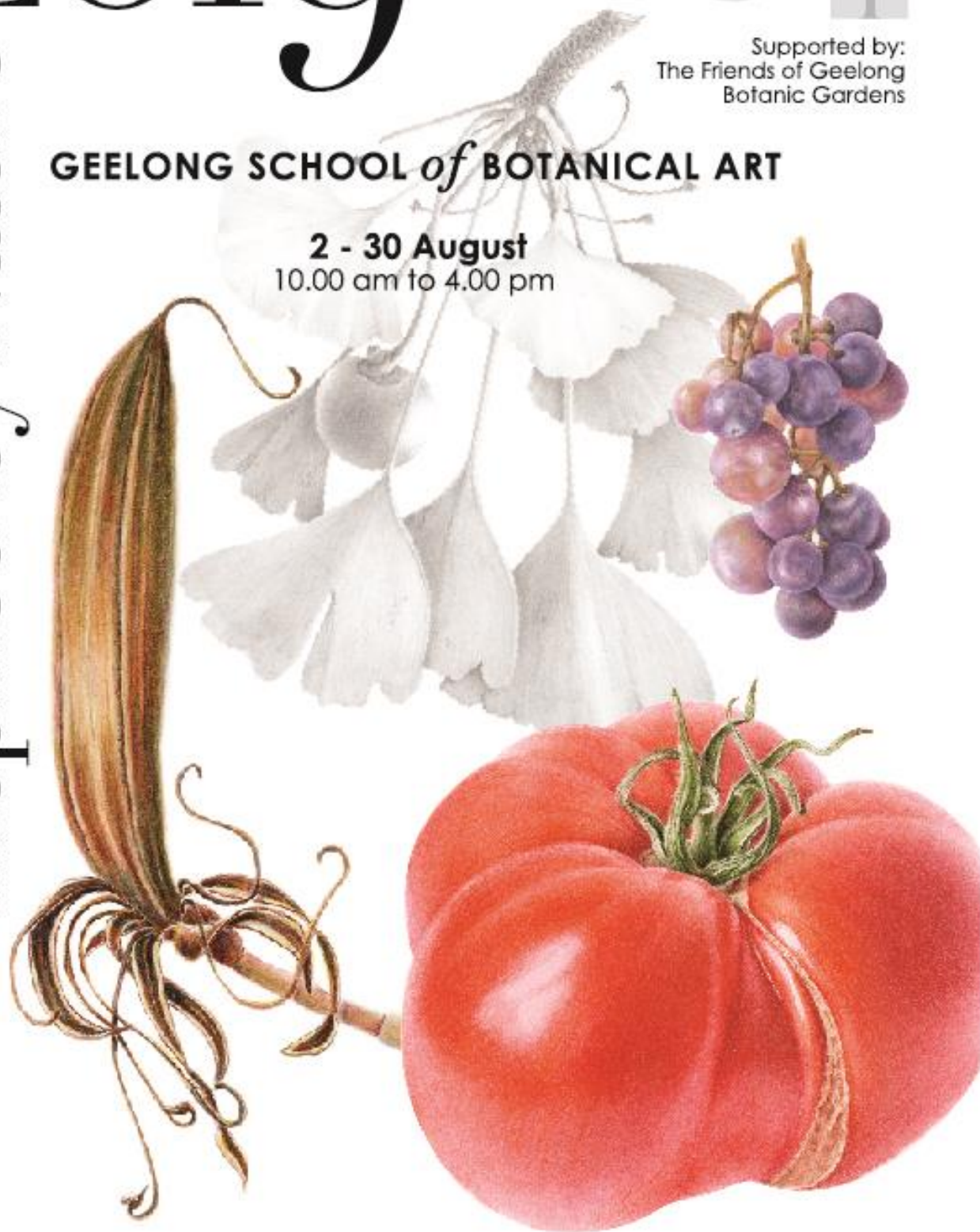
Inspired by Nature



Supported by:
The Friends of Geelong
Botanic Gardens

GEELONG SCHOOL *of* BOTANICAL ART

2 - 30 August
10.00 am to 4.00 pm



Deakin University Waterfront Exhibition Gallery
Cnr Cunningham Street and Western Beach Road, Geelong

INSPIRED BY NATURE 6 EXHIBITION

Official Exhibition Opening

Join Gordon Morrison, former Director of the Ballarat Art Gallery, Botanical Artists and the Friends of Geelong Botanic Gardens for the Exhibition Opening of *Inspired by Nature 6*. This biennial exhibition held by the Friends of Geelong Botanic Gardens features works by students and tutors of the Geelong School of Botanical Art.

Opening Night: Friday 2 August, 6.00 pm to 8.00 pm in the Deakin University Waterfront Exhibition Gallery. Tickets are available: \$15 each, contact the Friends' office for more details.

Botanical Art is one of the key activities organised by the Friends and we are enormously proud of our students and their achievements. Work by the students will be displayed, ranging



Prunus salicina by Deb Chirnside

from beginners to advanced; selected work by our tutors will also be exhibited. All works are for sale.

If you are unable to join us for the Exhibition Opening, we hope you can make time to visit the Deakin University Waterfront Exhibition Gallery during the month of August to help us celebrate all things botanical.

SUPPORT THE GEELONG BOTANIC GARDENS: JOIN THE FRIENDS

The Friends make significant financial contributions to the programs and projects at the Geelong Botanic Gardens and Eastern Park each year, including education, plantings, and building restorations.

Our members receive discounts for all our activities and events including participation in our School of Botanical Art Classes and Workshops, purchases at our Friends' Plant Nursery and our Bus Trips. Members also enjoy discounts upon presentation of a current membership card at Roraima Nursery, Valley Road Nursery and Diaco's Nursery. Members receive monthly newsletters and also our seasonal newsletter *Jubaea*.

Some members enjoy volunteering in a number of key support areas; Growers, Gardeners, Guides, Events Team, Library, *Jubaea Newsletter* and the Committee.

See the Friends' website for more information

MEMBERSHIP RENEWALS 2019-20

Current Members will receive membership renewal forms 2019-20 in the mail during June. If you would like a membership card please indicate at time of payment.

WEEKLY ACTIVITIES with the FRIENDS

FREE DISCOVERY WALKS

Every Wednesday at 11.00 am and Sunday at 2.00 pm.

THEMED WALKS

Second Sunday of every month at 2.00 pm. Meet your guide at the front steps. Gold coin Donation

Check the Friends' website for theme and date.

For more information, or to make a booking, contact the Friends' office on 5222 6053 between 10.00 am and 1.00 pm Monday to Friday.

DISCOVERY TABLE in the Gardens

Third Sunday of Every Month, 1.00 – 3.00 pm

Meet the Friends' Guides for interesting information and direction to key plants and seasonal change. Copies of the Self-guided Walks and information sheets are available at the Discovery Table and the Teahouse.

WEEKLY PLANT SALES

The Friends' Plant Nursery is **open every Wednesday 9.30 am to 12.30 pm** showcasing a wide selection of plants sourced from the Geelong Botanic Gardens. Located at the rear of GBG.

FGBG Patron: Dr Philip Moors

FGBG Committee: Allison Martland - President, Anthea Williams – Vice President, Judy Lavery – Vice President, Jane Laidlaw - Treasurer, Kate Kirkhope - Secretary, Ro Richards, Libby Hogg, Glenda Guest and Tilly Brunton.

Editorial Team: Luanne Thornton, Liz Bennetto, Judy Fyfe, Tracey Tilbury, Meralyn Roberts, Nadia Zacchigna, Allison Martland.

The Jubaea Newsletter is printed at GORDON PRINT, Little Malop Street, GEELONG 3220.

Jubaea is published by the Friends of Geelong Botanic Gardens Inc. PO Box 235, GEELONG 3220.

Friends' Office Hours: Monday - Friday, 10.00 am – 1.00 pm.

Friends' phone: (03) 5222 6053

Website: www.friendsgbg.org.au

Email: info@friendsgbg.org.au

FGBG activities @GBG and beyond



JUBAEA SUBMISSIONS for the Spring Edition are due by 1 September 2019.
All articles including high resolution photos (jpeg files) can be sent to the FGBG Office via email or USB.

JUNE

THEMED GUIDED WALK 'WINTER in the GARDENS'

Sunday 9 June, 2.00 pm. Gold Coin Donation.

Enjoy an exhilarating walk in our Botanic Garden when deciduous trees have lost their leaves and the evergreen conifers reveal their grandeur. Meet your Guide at the GBG main entrance steps.

WINTER LUNCHEON with GUEST SPEAKER Alison Pouliot

Monday 17 June, 12.00 noon, Truffleduck at Balmoral

Join the Friends for a two course luncheon with guest speaker **Alison Pouliot** who will give an illustrated and interactive talk 'Hazel Gloves and Felted Twiglet A Foray Among Fungi', which explores these fascinating relationships and looks at ways to encourage their flourishing in our gardens, parks and local environments.

\$75 members or \$85 non-members.

Bookings and payment by Friday 7 June.

JULY

THEMED GUIDED WALK 'ENDANGERED TREES and CONSERVATION'

Sunday 21 July, 2.00 pm. Gold Coin Donation.

Over the last 200 years many species of plants and animals have become extinct. For those species whose survival is threatened, a range of management and conservation measures are in place. During today's walk we will look at a selection of threatened species grown in the Geelong Botanic Gardens and discuss the important role that botanic gardens play in plant conservation.

Meet your Guide at the GBG main entrance steps

WINTER WEEKEND PLANT SALE

Saturday 27 and Sunday 28 July, 10.00 am to 4.00 pm.

Our nursery features a wide selection of Australian plants, colourful perennials, hardy shrubs, pelargoniums and salvias, sourced from the Geelong Botanic Gardens. The Friends' Nursery and Carpark is located at the rear of the Gardens. **Please note: the gates of the rear carpark near the Nursery will close at 4.00 pm sharp.**

FUND RAISER FILM NIGHT 'GREENFINGERS'

Tuesday 30 July, 6.00 pm Supper, 6.45 pm Screening

A blooming comedy starring Clive Owen, Helen Mirren and David Kelly, the film is loosely based on the true story about the prisoners of *HMP Leyhill*, a minimum-security prison in the Cotswolds, England, a story published in *The New York Times* in 1998. The Shirley Mills 'Plaza Theatre' is located in St Mary of the Angels Parish and seats an intimate group of 37. Bookings are essential and now open at the Friends' Office. \$18 members or \$23 non-members, delicious supper included before the movie.

AUGUST

GEELONG SCHOOL OF BOTANICAL ART

'INSPIRED BY NATURE 6' EXHIBITION 2019

THE EXHIBITION GALLERY AT WATERFRONT, DEAKIN UNIVERSITY

2- 30 August 2019, 10.00 am to 4.00 pm

OFFICIAL OPENING

Friday 2 August, 6.00 pm to 8.00 pm.

Guest Speaker, Gordon Morrison, former director of Art Gallery of Ballarat. Bookings at Friends' Office, \$15 per person.

AUGUST

DISCOVERY WALK – 'PLANTS from the GONDWANA CONTINENT'

Sunday 11 August, 2.00 pm. Gold Coin Donation.

What do Chile, South Africa, New Zealand, New Caledonia and Australia have in common? They were all once joined to Antarctica as part of the southern supercontinent of Gondwana. As they broke away, they carried with them families of plants that they share but are unknown in the northern hemisphere.

Meet your Guide at the GBG main entrance steps.

FGBG ANNUAL GENERAL MEETING

Monday 26 August, 5.30 for a 6.00 pm start

All Members are invited to attend our AGM with a light supper in the GBG Meeting Room. Parking is at the rear of the gardens. Our guest speaker is Heath Chasemore, Manager City Parks and Gardens, CoGG.

SEPTEMBER

THEMED GUIDED WALK 'PLANTS from CHINA'

Sunday 8 September, 2.00 pm. Gold Coin Donation.

China had the first Botanical Garden in 138 BC, an enormous park with 2,000 different plants and hot houses. Second Emperor Yang Di in the Sui Dynasty (581-618AD) built the largest gardens in history and searched far and wide for rare and beautiful plants. 2,000 years of Chinese horticultural endeavour enrich gardens all over the world.

Meet your Guide at the GBG main entrance steps to see how many of our plants have Chinese origins.

TRAIN TRIP TO ROYAL MELBOURNE GARDENS HERBARIUM

Tuesday 3 September

Train Travel 9.00 am to Melbourne, Return 4.30 pm (TBC)

Members who attended last year's Winter Lunch will recall the Guest Speaker, Dr Pina Milne, Manager of Collections at the National Herbarium at the Royal Botanic Gardens Victoria, who gave an inspired presentation about her work and invited us to visit. We will also visit David and Shirley Johnson in Fitzroy for a tour of their garden and the extensive street plantings which have been developed by some guerrilla gardening. Shirley won the ABC Gardening Award, Gardener of the Year 2016, for this work and the prize included a trip to Chelsea Flower Show.

EVENTS FOR THE DIARY in the Next Issue of Jubaea

14 October – Through the Garden Gates

24 October – Senior Week Guided Walk and Morning Tea

26-27 October – Spring Plant Sale



An unexpected visitor to the meeting room